

# ROSEFIELD



Fall - Winter 2022

# This is Rosefield

---

MONA  
LUXWARE

**MONA LUXWARE**  
**Uhren & Schmuckvertrieb**

D-40593 Düsseldorf

Tel.: +49 211 46890089

Fax: +49 211 46890087

Web: [www.MONA-LUXWARE.de](http://www.MONA-LUXWARE.de)

E-Mail: [rosefield@mona-luxware.de](mailto:rosefield@mona-luxware.de)



Rosefield reimagines watches & jewelry for relaxed elegance and easy living. We make fashion-forward styles that blend the classic with the modern. Where function meets form. At a price that works for today's cosmopolitan consumer.

Who is she? The Rosefield Woman is the epitome of city living with her finger on the pulse of what's next, what's new, what's now. She's the quintessential cool girl that isn't afraid to try new things. The Rosefield Woman sets trends — never follows them — and knows what she wants in life. This is at the core of our design philosophy.

Rosefield draws inspiration from Dutch minimalist design while taking cues from global contemporary fashion aesthetics. Our collections incorporate elements of vintage beauty from classic pieces mixed with the creativity of the future.

It's about being timeless, not trendy.



Find product photos, lifestyle images and more, by scanning the QR code.

Simple details.  
Pure luxury.

Novelties Fall - Winter 2022	5
Watches	15
Gift Sets	32
Straps	34
Visual Merchandising	51
Instructions	55
Warranty and After Sales	58

# Novelties

Fall - Winter 2022

# The Octagon XS

Available from September

- Case dimensions: 19.5 × 24 mm
- Case thickness: 7.0 mm
- Case material: Brass
- Dial type: Sunray etching
- Face: Mineral glass
- Strap size: 12 mm
- Strap material: Stainless steel
- Closure: Jewelry clasp
- Water resistance: 3 ATM
- Movement: Japanese Miyota Quartz



OWGSG-O60 € 129

White Sunray - Steel - Gold  
EAN: 8720246519341



OBSGS-O61 € 129

Black Sunray - Steel - Gold  
EAN: 8720246519358



OWDSG-O62 € 129

White Sunray - Steel - Duo  
Gold & Silver  
EAN: 8720246519365



OWGSS-O63 € 129

White Sunray - Steel - Silver  
EAN: 8720246519372



OWRSR-O64 € 129

White Sunray - Steel - Duo  
Silver & Rose Gold  
EAN: 8720246519389



## The Pearl Edit

Available from September

- Case dimensions: 36 mm
- Case thickness: 7.5 mm
- Case material: Brass
- Dial type: Mother of pearl
- Face: Mineral glass
- Strap size: 18 mm
- Strap material: Stainless steel
- Closure: Jewelry clasp
- Water resistance: 3 ATM
- Movement: Japanese Miyota Quartz



RMGMG-R06 € 99

White MOP - Mesh - Gold  
EAN: 8720246519440



RBGMG-R07 € 99

Black MOP - Mesh - Gold  
EAN: 8720246519457



RMSMS-R08 € 99

White MOP - Mesh - Silver  
EAN: 8720246519464



RMRMR-R09 € 99

White MOP - Mesh - Rose Gold  
EAN: 8720246519471



# New additions

Available from September

Available from September

## The West Village



**WBFLG-W95 € 99**

Forest Green Black - MOP - Gold

EAN: 8720246519402



**WBCLG-W96 € 99**

Cognac Black - MOP - Gold

EAN: 8720246519419



## The Oval



**OBGSG-OV14 € 119**

Black MOP - Steel - Gold

EAN: 8720246519525



## Studio Edition 01



**SBGSG-O66 € 159**

Studio Edition 01 Octagon Black - Steel - Gold

EAN: 8720246519532



## The Upper East Side



**UBGSG-U35 € 119**

Black MOP - Steel - Gold

EAN: 8720246519426



**UBSSS-U36 € 119**

Black MOP - Steel - Silver

EAN: 8720246519433



## The Small Edit



**SMGMG-S06 € 99**

White MOP - Mesh - Gold

EAN: 8720246519549



## Studio Edition O3

Available from November

- Case dimensions: 18 × 18 mm
- Case thickness: 7.5 mm
- Case material: Brass
- Ring material: Stainless steel 316L
- Dial type: Sunray etching
- Face: Facet polished mineral glass
- Size: Adjustable in size from 50-60 (EU ring size)
- Water resistance: 3 ATM
- Movement: Japanese Miyota Quartz



SBGSG-O67 € 139

Octagonal Watch Ring  
Black - Steel - Gold

EAN: 8720246519556



# The Champagne Collection

Available from November

The Boxy XS



QCGSG-Q048 € 119

Champagne - Steel - Gold  
EAN: 8720246519488



The Octagon



OCGSG-O65 € 129

Champagne - Steel - Gold  
EAN: 8720246519518



The Small Edit



SCGSG-S05 € 109

Champagne - Steel - Gold  
EAN: 8720246519501



# Watches





# Studio Edition 01

- Case dimensions: 18.5 × 15 mm
- Case thickness: 7.5 mm
- Case material: Brass
- Dial type: Sunray (1- 2) Mother of pearl (3 - 4)
- Face: Mineral glass
- Adjustable wrist size: 15.5 cm (min.) 18.7 cm (max.)
- Strap material: Stainless steel
- Closure: T-bar closure
- Water resistance: 3 ATM
- Movement: TMI VC01

1.



**SWGSG-O52 € 159**

Studio Edition 01 Octagon  
White - Steel - Gold  
EAN: 8720246512212



2.



**SWSSS-O53 € 159**

Studio Edition 01 Octagon  
White - Steel - Silver  
EAN: 8720246512229



3.



**SWGSG-OV13 € 159**

Studio Edition 01 Oval  
White - Steel - Gold  
EAN: 8720246512236



4.



**SWSSS-OV14 € 159**

Studio Edition 01 Oval  
White - Steel - Silver  
EAN: 8720246512243



# Studio Edition 02

- Case dimensions: 19.5 × 24 mm
- Case thickness: 7.0 mm
- Case material: Stainless steel
- Face: Mineral glass
- Strap material: Stainless steel
- Strap size: 16 mm
- Adjustable wrist size: 13.8 cm (min.) 18.5 cm (max.)
- Closure: T-bar closure
- Water resistance: 3 ATM
- Movement: Japanese Miyota Quartz



**SWGSG-O55 € 159**

Studio Edition 02  
White - Steel - Gold  
EAN: 8720246516395



**SBGSG-O57 € 159**

Studio Edition 02  
Black - Steel - Gold  
EAN: 8720246516593



**SWSSS-O56 € 159**

Studio Edition 02  
White - Steel - Silver  
EAN: 8720246516401



# The Octagon

- Case dimensions: 23 × 29 mm
- Case thickness: 7.5 mm
- Case material: Brass
- Face: Mineral glass
- Strap size: 14 mm
- Strap material: Stainless steel (1 - 5)  
Genuine leather (6)
- Closure: Jewelry clasp
- Water resistance: 3 ATM
- Movement: Japanese Miyota Quartz



1. **OCWSG-O40** € 129      2. **OCWSS-O41** € 129      3. **OCWSRG-O42** € 129      4. **OBSSG-O47** € 129

White Sunray - Steel - Gold  
EAN: 8720039335813

White Sunray - Steel - Silver  
EAN: 8720039335820

White Sunray - Steel - Rose Gold  
EAN: 8720039335837

Black Sunray - Steel - Gold  
EAN: 8720039339194



5. **OWSSSG-O48** € 129      6. **OBSBG-O49** € 119

White Sunray - Steel - Silver & Gold  
EAN: 8720039339200

Black Sunray - Leather - Gold  
EAN: 8720039339217



# The Pearl Edit

- Case dimensions: 36 mm
- Case thickness: 7.5 mm
- Case material: Brass
- Face: Mineral glass
- Strap size: 18 mm
- Strap material: Stainless steel (1 - 3)  
Genuine leather (4) Nubuck leather (5)
- Closure: Jewelry clasp (1 - 3)  
Buckle clasp (4 - 5)
- Water resistance: 3 ATM
- Movement: Japanese Miyota Quartz



1. **RMGSG-R01** € 119      2. **RMSSS-R02** € 119      3. **RMRSR-R03** € 119

White Mother of Pearl Steel - Gold  
EAN: 8720246513967

White Mother of Pearl Steel - Silver  
EAN: 8720246513974

White Mother of Pearl Steel - Rose Gold Silver Duo  
EAN: 8720246513981



4. **RMBLG-R04** € 99      5. **RMOLS-R05** € 99

White Mother of Pearl Butter Leather - Gold  
EAN: 8720246514025

White Mother of Pearl Olive Nubuck Leather - Silver  
EAN: 8720246514032



# The Boxy

- Case dimensions: 26 × 28 mm
- Case thickness: 7.0 mm
- Case material: Brass
- Face: Mineral glass
- Strap size: 16 mm
- Strap material: Stainless steel (1 - 8)
- Closure: Butterfly clasp (1 - 3)  
Jewelry clasp (4 - 8) Buckle clasp (9 - 10)
- Water resistance: 3 ATM
- Movement: Japanese Miyota Quartz



1. **QBSG-Q017** € 119  
Black - Steel - Gold  
EAN: 8720039330641

2. **QWSG-Q09** € 119  
White Sunray - Steel - Gold  
EAN: 8719632575122

3. **QWSS-Q08** € 119  
White Sunray - Steel - Silver  
EAN: 8719632575115

4. **QVSGD-Q013** € 119  
White Sunray - Steel - Silver Gold Duo  
EAN: 8720039330528



5. **QWSG-Q03** € 109  
White Sunray - Mesh - Gold  
EAN: 8719632575061

6. **QWSS-Q02** € 109  
White Sunray - Mesh - Silver  
EAN: 8719632575054

7. **QWSR-Q01** € 109  
White Sunray - Mesh - Rose Gold  
EAN: 8719632575047

8. **QBMG-Q06** € 109  
Black - Mesh - Gold  
EAN: 8719632575092



9. **QSCG-Q029** € 99  
White Sunray - Cognac - Gold  
EAN: 8720039333956

10. **QBFGG-Q031** € 99  
Black - Forest Green - Gold  
EAN: 8720039334168



## The Boxy XS

- Case dimensions: 22 × 24 mm
- Case thickness: 6.4 mm
- Case material: Brass
- Face: Mineral glass
- Strap size: 14 mm
- Strap material: Stainless steel
- Closure: Jewelry clasp
- Water resistance: 3 ATM
- Movement: Japanese Miyota Quartz



QMWSG-Q021 € 119

White Sunray - Steel - Gold  
EAN: 8720039333406



QMWSS-Q020 € 119

White Sunray - Steel - Silver  
EAN: 8720039333390



QMBG-Q025 € 119

Black - Steel - Gold  
EAN: 8720039333444



QMWSSG-Q023 € 119

White Sunray - Steel - Silver  
Gold Duo  
EAN: 8720039333420



QMWSSR-Q024 € 119

White Sunray - Steel - Silver  
Rose Gold Duo  
EAN: 8720039333437



QMWMG-Q039 € 109

White Sunray - Mesh - Gold  
EAN: 8720039335868



QMWMS-Q038 € 109

White Sunray - Mesh - Silver  
EAN: 8720039335875



QMWMRG-Q040 € 109

White Sunray - Mesh - Rose  
Gold  
EAN: 8720039335882



## The Small Edit

- Case dimensions: 26 mm
- Case thickness: 6.5 mm
- Case material: Brass
- Face: Mineral glass
- Strap size: 12 mm
- Strap material: Stainless steel
- Closure: Jewelry clasp
- Water resistance: 3 ATM
- Movement: Japanese Miyota Quartz



26WSG-267 € 119

White - Steel - Gold  
EAN: 8720039333970



26BSG-268 € 119

Black - Steel - Gold  
EAN: 8720039333987



26SGD-269 € 119

White - Steel - Silver Gold  
Duo  
EAN: 8720039333994



26SRGD-271 € 119

White Sunray - Steel - Silver  
Rose Gold Duo  
EAN: 8720039334014



26WR-265 € 99

Mother of pearl - Mesh -  
Rose gold  
EAN: 8719632571957



26WS-266 € 99

Mother of pearl - Mesh -  
Silver  
EAN: 8719632571964



# The Oval

- Case dimensions: 24 × 29 mm
- Case thickness: 6.7 mm
- Case material: Brass
- Face: Mineral glass
- Strap size: 14 mm
- Strap material: Stainless steel
- Closure: Jewelry clasp
- Water resistance: 3 ATM
- Movement: Japanese Miyota Quartz



1. **OWGSG-OV01** € 119      2. **OWGSS-OV03** € 119      3. **OWGSR-OV02** € 119

White Mother of Pearl Steel - Gold      White Mother of Pearl Steel - Silver      White Mother of Pearl Steel - Rose Gold

EAN: 8720246511529      EAN: 8720246511581      EAN: 8720246511550



4. **OWGMG-OV10** € 109      5. **OWSMS-OV11** € 109      6. **OWRMR-OV12** € 109

White Mother of Pearl Mesh Steel - Gold      White Mother of Pearl Mesh Steel - Silver      White Mother of Pearl Mesh Steel - Rose Gold

EAN: 8720246511056      EAN: 8720246511963      EAN: 8720246511970



# The West Village

- Case dimensions: 33 mm
- Case thickness: 7.0 mm
- Case material: Brass
- Face: Mineral glass
- Strap size: 16 mm
- Strap material: Nubuck leather
- Closure: Buckle clasp
- Water resistance: 3 ATM
- Movement: Japanese Miyota Quartz



**WBUG-W70** € 99      **WEGR-W75** € 99      **WSPR-W73** € 99

Vintage Brushed - Velvet Blue - Gold      Mother of pearl - Elephant Grey - Rose Gold      Blush Pink - Soft Pink - Rose Gold

EAN: 8719324227797      EAN: 8719324227841      EAN: 8719324227827



**WFGG-W85** € 99      **WWCG-W86** € 99

Mother of pearl - Fresh olive Green - Gold      Blush pink - Cognac - Gold

EAN: 8720039335844      EAN: 8720039335851



# The Ace

- Case dimensions: 33 mm
- Case thickness: 7.5 mm
- Case material: Brass
- Face: Mineral glass
- Strap size: 18 mm
- Strap material: Stainless steel
- Closure: Jewelry clasp
- Water resistance: 3 ATM
- Movement: Japanese Miyota Quartz



**ACSG-A03** € 129

Silver Sunray - Steel - Gold  
EAN: 8720039330429



**ACSS-A04** € 129

Silver Sunray - Steel - Silver  
EAN: 8720039330436



**ACSGD-A01** € 129

Silver Sunray - Steel - Silver Gold Duo  
EAN: 8720039330405



**ACSRD-A06** € 129

Silver Sunray - Steel - Silver Rose Gold Duo  
EAN: 8720039330450



**ACBKG-A13** € 129

Black - Steel - Gold  
EAN: 8720039330702



# The Ace XS

- Case dimensions: 29 mm
- Case thickness: 7.4 mm
- Case material: Brass
- Face: Mineral glass
- Strap size: 16 mm
- Strap material: Stainless steel
- Closure: Jewelry clasp
- Water resistance: 3 ATM
- Movement: Japanese Miyota Quartz



**ASGSG-A15** € 129

Silver Sunray - Steel - Gold  
EAN: 8720246511024



**ASDSSG-A16** € 129

Silver Sunray - Steel - Silver / Gold Duotone  
EAN: 8720246511031



**ABGSG-A19** € 129

Black - Steel - Gold  
EAN: 8720246511987



**ASSSS-A20** € 129

Silver Sunray - Steel - Silver  
EAN: 8720246512007



**ASRSR-A21** € 129

Silver Sunday - Steel Silver Rose Gold Duotone  
EAN: 8720246512038



# The Upper East Side

- Case dimensions: 33 mm
- Case thickness: 7.7 mm
- Case material: Brass
- Face: Mineral glass
- Strap size: 16 mm
- Strap material: Stainless steel (1 - 5)  
Caviar patterned genuine leather (6 - 8)
- Closure: Butterfly clasp (1 - 2)  
Jewelry clasp (3 - 5) Buckle clasp (6 - 8)
- Water resistance: 3 ATM
- Movement: Japanese Miyota Quartz



1. **UEWG-U21** € 119  
Mother of pearl - Steel - Gold  
EAN: 8719324227742

2. **UEWS-U22** € 119  
Mother of pearl - Steel - Silver  
EAN: 8719324227759

3. **UWDSSG-U30** € 119  
Mother of pearl - Steel - Silver/Gold Duotone  
EAN: 8720246511055

4. **UWGSU-U31** € 119  
Crystals Mother of Pearl Steel - Gold  
EAN: 8720246512069



5. **UWSSU-U32** € 119  
Crystals Mother of Pearl Steel - Silver  
EAN: 8720246512090

6. **UWBCSS-U26** € 89  
Mother of pearl - Leather - Black & Silver  
EAN: 8720039338982

7. **UWCCSG-U27** € 89  
Mother of pearl - Leather - Dark Brown & Gold  
EAN: 8720039338999

8. **UWGCSS-U29** € 89  
Mother of pearl - Leather - Grey & Rose Gold  
EAN: 8720039339019



# The Tribeca

- Case dimensions: 33 mm
- Case thickness: 7.0 mm
- Case material: Brass
- Face: Mineral glass
- Strap size: 16 mm
- Strap material: Stainless steel
- Closure: Jewelry clasp
- Water resistance: 3 ATM
- Movement: Japanese Miyota Quartz



**TWG-T51** € 99  
White - Mesh - Gold  
EAN: 8719324227414

**TWS-T52** € 99  
White - Mesh - Silver  
EAN: 8719324227421

**TWR-T50** € 99  
White - Mesh - Rose Gold  
EAN: 8719324227407

**TBR-T59** € 99  
Black - Mesh - Rose Gold  
EAN: 8719324227711



# The Mercer

- Case dimensions: 38 mm
- Case thickness: 8.0 mm
- Case material: Brass
- Face: Mineral glass
- Strap size: 18 mm
- Strap material: Stainless steel
- Closure: Jewelry clasp
- Water resistance: 3 ATM
- Movement: Japanese Miyota Quartz



MWG-M41 € 99

White - Mesh - Gold  
EAN: 8719324227193



MWS-M40 € 99

White - Mesh - Silver  
EAN: 8719324227186



MWR-M42 € 99

White - Mesh - Rose Gold  
EAN: 8719324227209



MBR-M45 € 99

Black - Mesh - Rose Gold  
EAN: 8719324227698



MBB-M43 € 99

Black - Mesh - Black  
EAN: 8719324227216



# The Brewery

- Case dimensions: 38 mm
- Case thickness: 7.0 mm
- Case material: Brass
- Face: Mineral glass
- Strap size: 18 mm
- Strap material: Genuine leather
- Closure: Buckle clasp
- Water resistance: 3 ATM
- Movement: Japanese Miyota Quartz



BWBRR-B3 € 99

White - Brown - Rose Gold  
EAN: 8719324227025



BWGS-B10 € 99

White - Grey - Silver  
EAN: 8719324227063



BBBR-B11 € 99

Black - Black - Rose Gold  
EAN: 8719324227070





# Gift Sets



**WEGTR-X184** € 119

The West Village Elephant Grey  
+ Mesh Rose Gold Strap  
EAN: 8719632571858



**BMWMG-X240** € 129

The Boxy XS White Sunray  
Gold + Mesh Gold Strap  
EAN: 8720039334946



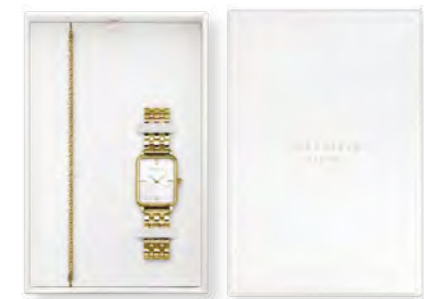
**BFGMG-X237** € 119

The Boxy Black Forest Green  
Gold + Mesh Gold Strap  
EAN: 8720039334915



**BMWLBG-X241** € 129

The Boxy XS White Sunray  
Gold + Multi Liquid Charms  
Bracelet Gold  
EAN: 8720039334953



**OCWSGJ-X265** € 139

The Octagon White Sunray  
Steel Gold with Roset  
Bracelet Gold Gift Set  
EAN: 8720246510904



# Straps

## The Pearl Edit

- Strap width: 18 mm
- Strap material: Stainless steel (1 - 6) Genuine leather (7) Nubuck leather (8)
- Closure: Jewelry clasp (1 - 6) Buckle clasp (7 - 8)

Interchangeable with watches from The Pearl Edit, The Ace, The Mercer and The Bowery collections.

<p>1. </p> <p><b>PGTG-S332</b> € 59</p> <p>Steel - Gold EAN: 8720246514520</p> 	<p>2. </p> <p><b>PSTS-S333</b> € 59</p> <p>Steel - Silver EAN: 8720246514537</p> 	<p>3. </p> <p><b>PDTR-S334</b> € 59</p> <p>Steel - Rose Gold Silver Duo EAN: 8720246514544</p> 	<p>4. </p> <p><b>PGTMG-S341</b> € 39</p> <p>Steel - Gold EAN: 8720246519648</p> 
<p>5. </p> <p><b>PSTMS-S342</b> € 39</p> <p>Steel - Silver EAN: 8720246519655</p> 	<p>6. </p> <p><b>PRTMR-S343</b> € 39</p> <p>Steel - Rose Gold EAN: 8720246519662</p> 	<p>7. </p> <p><b>PBTG-S330</b> € 29</p> <p>Butter Leather Tapered - Gold EAN: 8720246514506</p> 	<p>8. </p> <p><b>PONS-S331</b> € 29</p> <p>Olive Nubuck Leather Tapered - Silver EAN: 8720246514513</p> 

# The Octagon

- Strap width: 14 mm
- Strap material: Stainless steel (1 - 4) Genuine leather (5) Nubuck leather (6 - 7)
- Closure: Jewelry clasp (1 - 4) Buckle clasp (5 - 7)

Interchangeable with watches from The Octagon, The Boxy XS and The Oval collections.



# The Octagon XS

- Strap width: 12 mm
- Strap material: Stainless steel
- Closure: Jewelry clasp

Interchangeable with watches from The Small Edit and The Octagon XS collections.



# The Boxy

- Strap width: 16 mm
- Strap material: Stainless steel
- Closure: Jewelry clasp

Interchangeable with watches from The Ace XS, The Boxy, The Gabby, The Tribeca, The West Village and The Upper East Side collections.

1.



**QVSGD-S191** € 59

Steel - Silver Gold Duo  
EAN: 8719632575252

2.



**QVSRD-S192** € 59

Steel - Silver Rose gold Duo  
EAN: 8720039330627



# The Boxy XS

- Strap width: 14 mm
- Strap material: Stainless steel
- Closure: Jewelry clasp

Interchangeable with watches from The Boxy XS, The Octagon and The Oval collections.



**QMSG-S195** € 59

Steel - Gold  
EAN: 8720039333468



**QMSS-S194** € 59

Steel - Silver  
EAN: 8720039333451



**QMSRG-S196** € 59

Steel - Rose Gold  
EAN: 8720039333475



**QMSSG-S197** € 59

Steel - Silver Gold Duo  
EAN: 8720039333482





**QMSSR-S198** € 59

Steel - Silver Rose Gold Duo  
EAN: 8720039333499



**QMWMG-S235** € 39

Mesh - Gold  
EAN: 8720039336094



**QMWMS-S234** € 39

Mesh - Silver  
EAN: 8720039336070



**QMWMR-S236** € 39

Mesh - Rose Gold  
EAN: 8720039336100



# The Ace

- Strap width: 18 mm
- Strap material: Stainless steel
- Closure: Jewelry clasp

Interchangeable with watches from The Pearl Edit, The Ace, The Mercer and The Bowery collections.



ACSG-S188 € 59

Steel - Gold  
EAN: 8720039330580



ACSS-S189 € 59

Steel - Silver  
EAN: 8720039330597



ACSGD-S186 € 59

Steel - Silver Gold Duo  
EAN: 8720039330566



ACSRD-S187 € 59

Steel - Silver Rose Gold Duo  
EAN: 8720039330573



ACRS-S193 € 59

Steel - Rose Gold  
EAN: 8720039333369



# The Ace XS

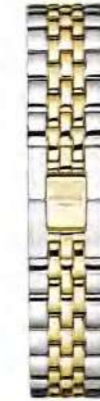
- Strap width: 16 mm
- Strap material: Stainless steel
- Closure: Jewelry clasp

Interchangeable with watches from The Ace XS, The Boxy, The Gabby, The Tribeca, The West Village and The Upper East Side collections.



AGTSG-S305 € 59

Steel - Gold  
EAN: 8720246511000



AGTSSG-S306 € 59

Steel - Silver Gold Duo  
EAN: 8720246511017



ASTSS-S318 € 59

Steel - Silver  
EAN: 8720246512021



ASRTSR-S319 € 59

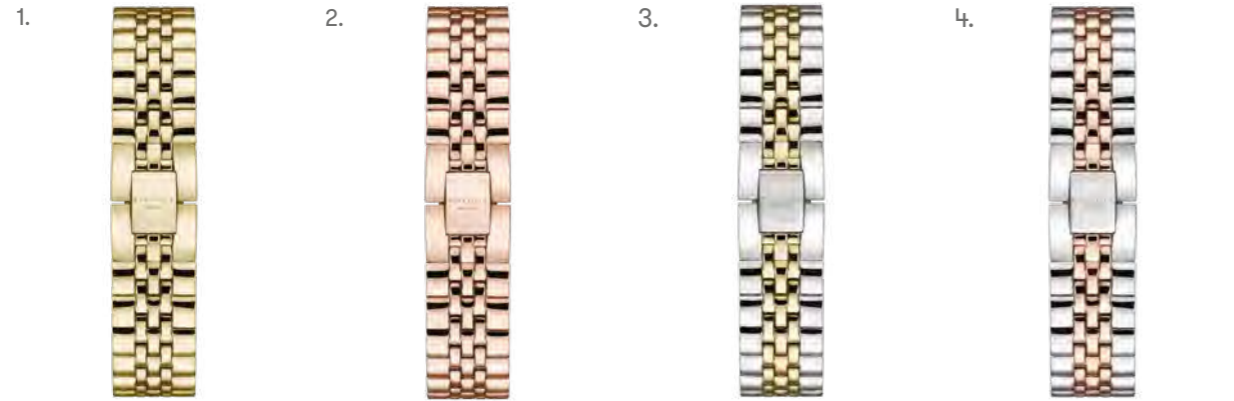
Steel - Silver Rose Gold Duo  
EAN: 8720246512052



# The Small Edit

- Strap width: 12 mm
- Strap material: Stainless steel [1 - 8] Nubuck leather [9 - 12]
- Closure: Jewelry clasp [1 - 8] Buckle clasp [9 - 12]

Interchangeable with watches from The Small Edit and The Octagon XS collections.



1. **26SG-S202** € 59      2. **26SRG-S204** € 59      3. **26SGD-S203** € 59      4. **26SRGD-S205** € 59

Steel - Gold      Steel - Rose Gold      Steel - Silver Gold Duo      Steel - Silver Rose Gold Duo  
 EAN: 8720039334106      EAN: 8720039334120      EAN: 8720039334113      EAN: 8720039334137



5. **SSSS-S327** € 59      6. **SGMG-S324** € 39      7. **26SI-S159** € 39      8. **26RG-S158** € 39

Steel - Silver      Mesh - Gold      Mesh - Silver      Mesh - Rose Gold  
 EAN: 8720246513912      EAN: 8720246513882      EAN: 8719632572374      EAN: 8719632572367



9. **SBNG-S326** € 39      10. **SGNS-S325** € 39      11. **SMGLR-S322** € 39      12. **SMPLR-S323** € 39

Black - Gold      Forest Green - Silver      Elephant Grey - Rose Gold      Soft Pink - Rose Gold  
 EAN: 8720246513905      EAN: 8720246513899      EAN: 8720246513851      EAN: 8720246513868



# The West Village

- Strap width: 16 mm
- Strap material: Nubuck leather (1 - 5) Genuine leather (6 - 11)
- Closure: Buckle clasp

Interchangeable with watches from The Ace XS, The Boxy, The Gabby, The Tribeca, The West Village and The Upper East Side collections.



**WBUGS-S137 € 39**      **WFGG-S211 € 39**      **WEGRS-S142 € 39**      **WSPRS-S140 € 39**

Velvet Blue - Gold  
EAN: 8719324227889

Forest Green - Gold  
EAN: 8720039334151

Elephant Grey - Rose Gold  
EAN: 8719324227933

Soft Pink - Rose Gold  
EAN: 8719324227919



**WBLGS-S138 € 39**      **WCGRG-S208 € 39**      **WCG-S209 € 39**      **WAG-S210 € 39**

Black - Gold  
EAN: 8719324227896

Cool Grey - Rose Gold  
EAN: 8720039334076

Cognac - Gold  
EAN: 8720039334083

Aubergine - Gold  
EAN: 8720039334090



**WOPRG-S206 € 39**      **WOGRG-S207 € 39**      **WOGG-S240 € 39**

Old Pink - Rose Gold  
EAN: 8720039334052

Fresh Olive Green - Rose Gold  
EAN: 8720039334069

Fresh Olive Green - Gold  
EAN: 8720039337756



# The Upper East Side

- Strap width: 16 mm
- Strap material: Stainless steel (1 - 6) Caviar patterned genuine leather (7 - 9)
- Closure: Butterfly clasp (1 - 6) Buckle clasp (7 - 9)

Interchangeable with watches from The Upper East Side, The Boxy, The Ace XS, The Gabby, The Tribeca and The West Village collections.



1. **UEG-S135** € 49      2. **UES-S136** € 49      3. **UER-S134** € 49

Steel - Gold      Steel - Silver      Steel - Rose Gold  
 EAN: 8719324227865      EAN: 8719324227872      EAN: 8719324227858



4. **UDSSG-S307** € 59      5. **UGSG-S320** € 59      6. **USSS-S321** € 59

Steel - Gold      Steel tapered - Gold      Steel tapered - Silver  
 EAN: 8720246511048      EAN: 8720246512083      EAN: 8720246512113



7. **UBCSS-S302** € 29      8. **UBCGS-S303** € 29      9. **UGCRG-S304** € 29

Black leather - Silver      Dark Brown leather - Gold      Grey leather - Rose Gold  
 EAN: 8720039339293      EAN: 8720039339309      EAN: 8720039339316





# The Oval

- Strap width: 14 mm
- Strap material: Stainless steel (1 - 3) Nubuck leather (4 - 7)
- Closure: Jewelry clasp (1 - 3) Buckle clasp (4 - 7)

Interchangeable with watches from The Octagon, The Boxy XS and The Oval collections.

1.



OGSG-S308 € 59

Steel - Gold

EAN: 8720246511543



2.



OGSS-S310 € 59

Steel - Silver

EAN: 8720246511604



3.



OGSR-S309 € 59

Steel - Rose Gold

EAN: 8720246511574



4.



OGNG-S311 € 29

Light Grey Nubuck - Gold

EAN: 8720246511611



5.



OLNG-S312 € 29

Lilac Nubuck - Gold

EAN: 8720246511628



6.



OLNS-S313 € 29

Lilac Nubuck - Silver

EAN: 8720246511635



7.



OGNR-S314 € 29

Light Grey Nubuck - Rose Gold

EAN: 8720246511642



# The Tribeca

- Strap width: 16 mm
- Strap material: Stainless steel
- Closure: Jewelry clasp

Interchangeable with watches from The Ace XS, The Boxy, The Gabby, The Tribeca, The West Village and The Upper East Side collections.



TMGS-S126 € 39

Mesh - Gold

EAN: 8719324227599



TMSS-S127 € 39

Mesh - Silver

EAN: 8719324227605



TMRS-S125 € 39

Mesh - Rose Gold

EAN: 8719324227582



# The Bowery

- Strap width: 18 mm
- Strap material: Genuine leather
- Closure: Buckle clasp

Interchangeable with watches from The Pearl Edit, The Ace, The Mercer and The Bowery collections.



SBLRC-S100 € 29

Stitched Black - Rose gold  
EAN: 8719324227278



SBRRC-S102 € 29

Stitched Brown - Rose Gold  
EAN: 8719324227292



SGSC-S109 € 29

Stitched Grey - Rose Gold  
EAN: 8719324227322



# Visual Merchandising

Layout & Guidelines

# Layout

In consideration for the available space in your window showcase, we ask that for each visual merchandising set you respect the layout of all individual pieces as outlined below.



**35 SKUs set**      **DP025**

Approx. dimensions:  
W65 x D55 cmm  
EAN: 8719632572220



**50 SKUs set**      **DP026**

Approx. dimensions:  
W68 x D55 cmm  
EAN: 8719632572237



The visual backboards are not included by default in the visual merchandising kits. They will be sent separately upon request. You may request several visual backboards - one for your store front window and one for inside the store for instance.



**Visual Backboard**      **DP013**

Small  
W29 x H23 cmm  
EAN: 8719632570967



**Visual Backboard**      **DP019**

Large  
W38 x H44 cmm  
EAN: 8719632572442



# Merchandising Guidelines

Keep watches from the same collection together. Don't mix watches with 33mm and 38mm dials on one display element.

DO:



DON'T:



Place taller elements at the back and shorter elements at the front.

DO:



DON'T:



Place Studio items laying down straight on the available ramp.

DO:



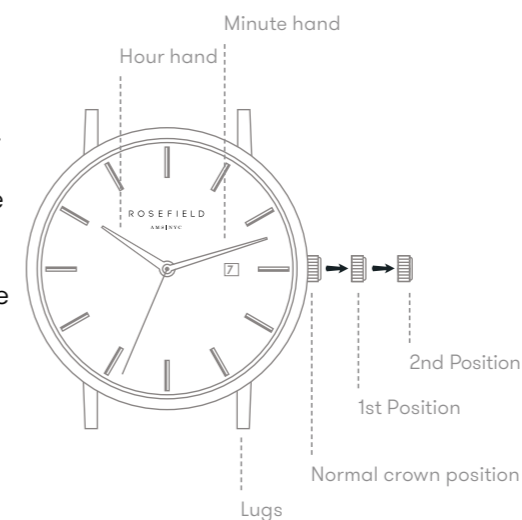
DON'T:



# Instructions

## SETTING THE TIME

1. Remove the plastic stopper to start the watch.
2. Pull the crown out to the second position.
3. Turn the crown to set the time.
4. Push the crown back to the normal position.

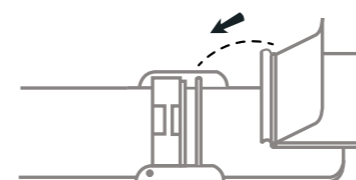


## SETTING THE DATE

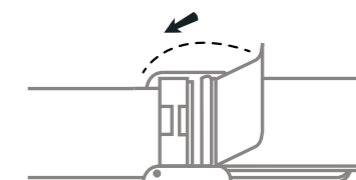
1. Pull the crown out to the first position.
2. Turn the crown counter-clockwise to set the date.
3. Push the crown back to the normal position.

*\* If the date is set between the hours of 9:00 PM and 1:00 AM, the date may not change the following day.*

## CLOSING THE CLASP OF YOUR MESH STRAP

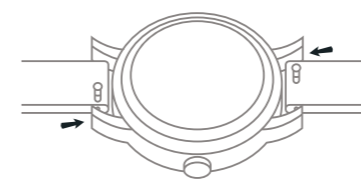


1. Hook the top part of the clasp onto the thin metal bar.

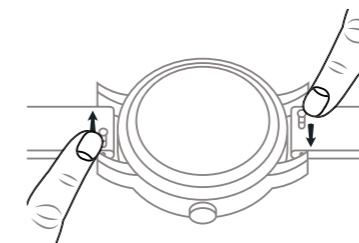


2. Snap the closure on.

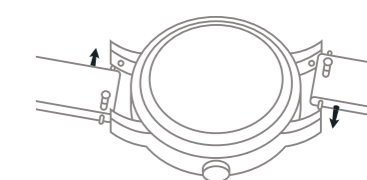
## CHANGING YOUR STRAP



1. Securely hold the watch and locate the pin mechanism on the bottom side of the strap.

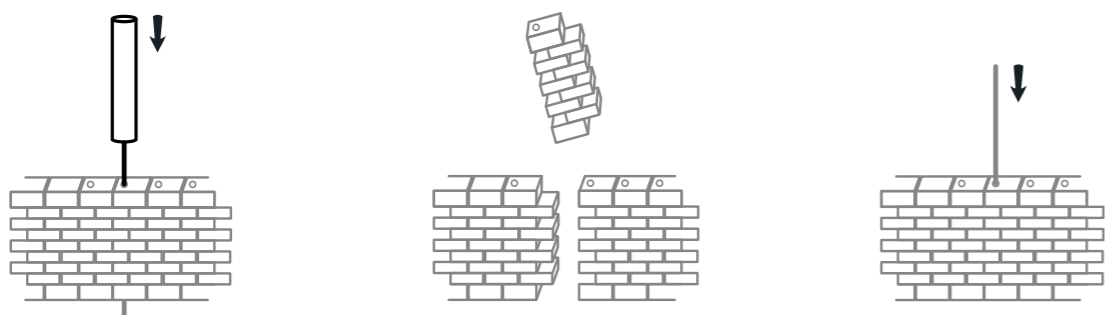


2. Slide the pin to the opposite side to release the strap from the lugs.



3. To attach a new strap, start with the pin located on the opposite side of the slide mechanism. Place the pin in the lug, while slightly tilting the strap forward. Slide the pin mechanism and place the other pin between the lugs.

### ADJUSTING THE SIZE OF YOUR STEEL STRAP

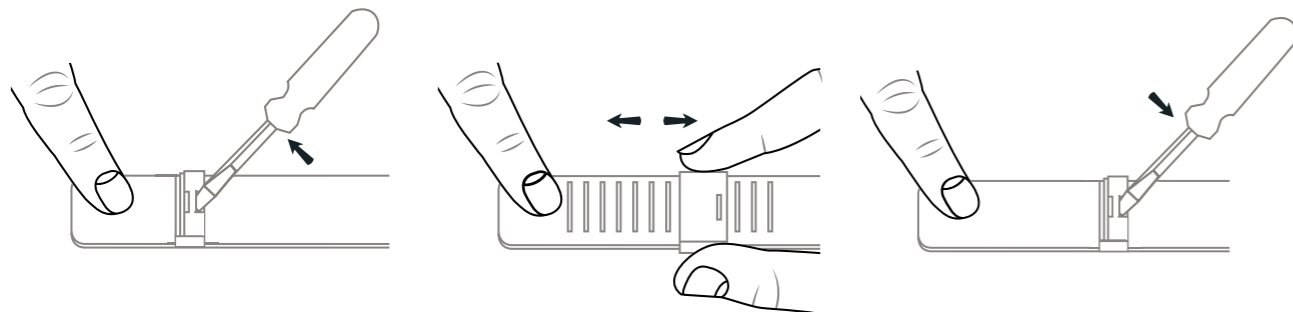


**1.** Insert the strap tool (supplied with every steel strap) into the hole on the side of the strap and push the pin out in the direction of the arrow. Using a small household hammer, tap lightly until the pin comes out on the other side. Grasp the pin and pull out.

**2.** Remove or add required strap links. If removing more than one strap link, remove an equal number of links from both sides to keep the strap even and symmetrical.

**3.** After removing or adding the necessary number of strap links, place the pins back in the opposite direction of the arrows, the pin's grooved top faced down. To finish, tap the pins back through using the hammer.

### ADJUSTING THE SIZE OF YOUR MESH STRAP

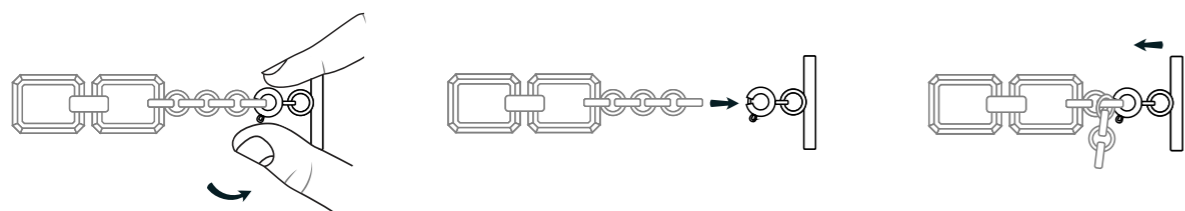


**1.** Insert a metal tool into the slot and lift up the plate clamp.

**2.** On the back side, slide the locking clasp to the desired position to adjust the length of the strap.

**3.** Press the plate clamp back down (firmly) to lock the clasp to the mesh strap.

### ADJUSTING THE SIZE OF YOUR CHAIN BRACELET



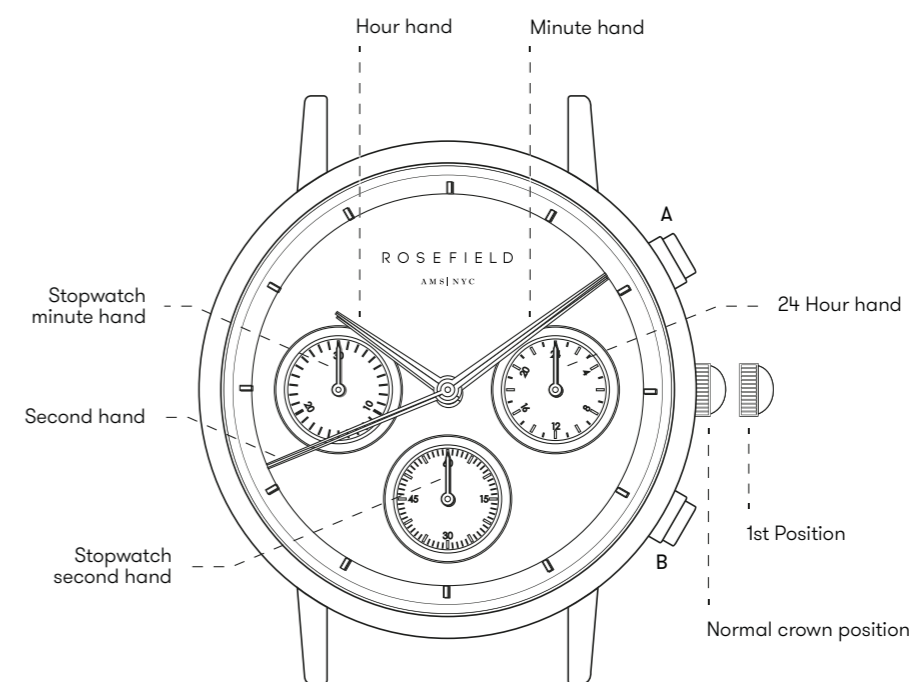
**1.** Open the spring lock, and release the T-bar from the chain tail.

**2.** Separate the T-bar from the chain tail.

**3.** Attach the T-bar with spring lock to the chain tail in the correct size to fit your wrist.

### USING YOUR STOPWATCH

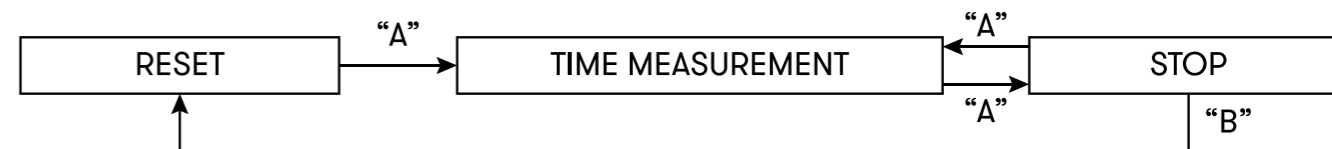
This stopwatch is able to measure and display time in 1 second up to a maximum of 29 minutes and 59 seconds. The stopwatch will stop automatically after running continuously for 30 minutes.



**1.** Press button "A" to start the stopwatch.

**2.** The stopwatch can be started and stopped by pressing button "A".

**3.** Pressing button "B" resets the stopwatch and the stopwatch minute and second hands return to their ZERO positions.  
\* Button A / B does not function during resetting the stopwatch.



### STOPWATCH RESET

This procedure should be performed when the stopwatch second hand does not return to the ZERO position after the stopwatch has been reset, and after the battery has been replaced.

**1.** Pull the crown out to the 1st Position.

**2.** Press button "A" to set the second hand of the stopwatch to the ZERO position.

**3.** Once the hands have been zeroed, the time is reset and you can return the crown to its normal position.

\* The stopwatch minute hand is synchronized with the second hand of the stopwatch.  
\* The second hand of the stopwatch can be advanced rapidly by continuously pressing button "A".

# Warranty & After Sales

---

## WARRANTY

---

Your Rosefield product is guaranteed free from manufacturing defects for a period of 24 months from the date of purchase. This guarantees the buyer that the product meets the standards of usability, reliability, and durability.

The warranty does not apply to:

- Damages as a result of inattention or improper usage such as scratching, bouncing or falling.
- Failure or damage caused by unjustifiable repair or modification performed by a third party, without prior written permission by ROSEFIELD.
- Failure or damage caused by fire or water (the watches are 3 ATM water-resistant).
- Visible wear traces on the watch (e.g. minor scratches on the case and/or crystal, alteration of the color on the watchband and scratches or softening of the leather strap).
- Battery replacement, also not during the warranty term.

## CUSTOMER SERVICE

---

Business to Business Support

Email: [b2b@rosefieldwatches.com](mailto:b2b@rosefieldwatches.com)

# MONA LUXWARE

## **MONA LUXWARE** **Uhren & Schmuckvertrieb**

D-40593 Düsseldorf

Tel.: +49 211 46890089

Fax: +49 211 46890087

Web: [www.MONA-LUXWARE.de](http://www.MONA-LUXWARE.de)

E-Mail: [rosefield@mona-luxware.de](mailto:rosefield@mona-luxware.de)

